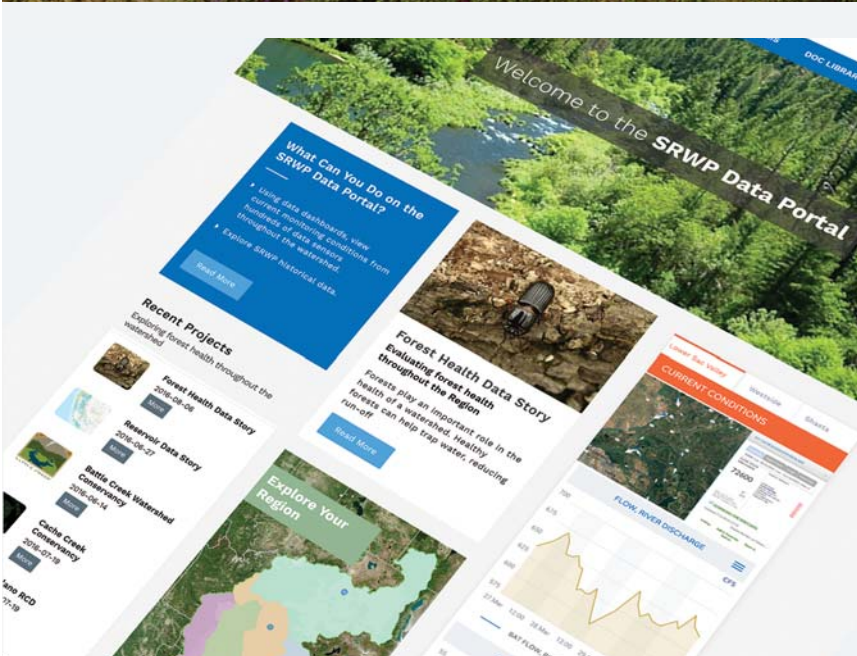


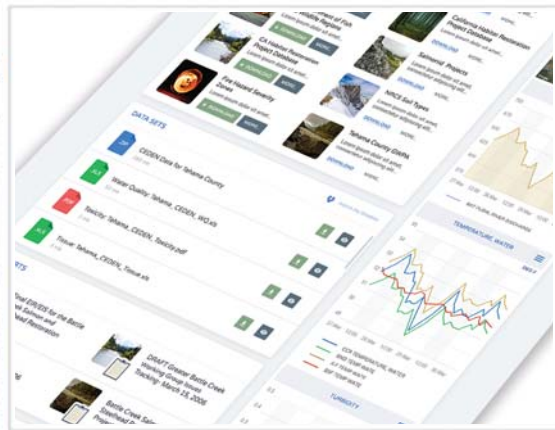
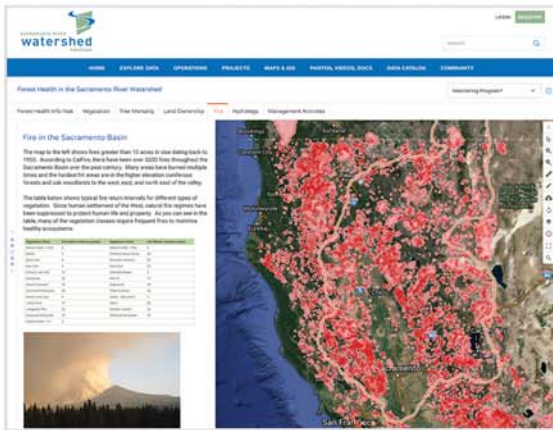
# Welcome to the Sacramento River Watershed Data Portal



## Sacramento River Watershed Data Portal Features

- ▶ Access to current monitoring conditions from hundreds of sensors throughout the watershed.
- ▶ Explore historical data and review data stories.
- ▶ Access catalogs of current research and reports.
- ▶ View, synthesize and download over 150 map layers.
- ▶ Dig into important topics including forest health, river water temperature, dam operations and fisheries management.
- ▶ Explore data information hubs covering key topics.
- ▶ Add and track your own projects.

## Data Information Hubs for Key Topics



## Data Stories

**Explore and Contribute Data to the Sacramento and Central Valley Community**

Upload and share your information

## View Current Conditions

Real-time data and visualizations from key sensors throughout the region

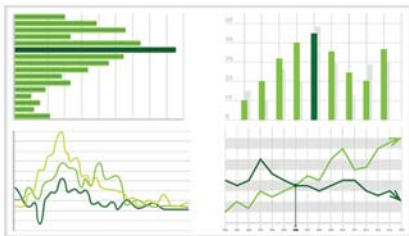
Explore Data and Contribute Data from the Sacramento

View More

[data.sacriver.org](http://data.sacriver.org)



# What Can You Do on the Sacramento River Watershed Data Portal?



## Turning Data into Information

### Data Dashboards and Data Stories

The Sacramento River Watershed Data Portal (Portal) is a collaborative effort to aggregate watershed information and to develop informative and captivating stories. Users can combine maps, project pages, graphs, and documents to convey key messages to a broader audience.



## Projects - Documents - Data Catalogs

### Catalogs of data, documents, photos, maps, projects and more

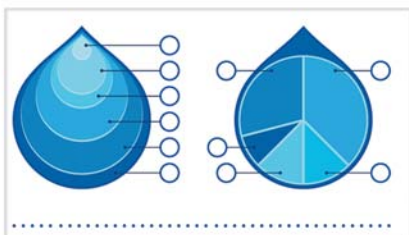
The Portal document and data catalogs have hundreds of resources including scientific papers, reports, images, videos, map layers and datasets for you to discover, share, add to projects, and to collaborate with other stakeholders.



## Interactive Maps

### View, synthesize and download more than 150 map layers

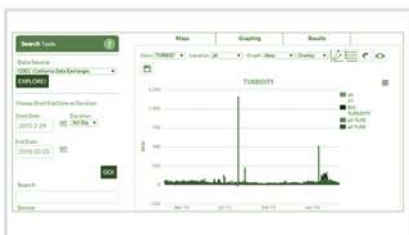
Combine map layers and customize visualizations using more than 150 Sacramento River watershed and California datasets. Save to your personalized map catalog and share with colleagues.



## In-Depth Topics

### Dig deeper into important topics

The Portal brings you the data and information to dig deeper into important topics, understanding their regulatory constraints and underlying management objectives.



## OpenNRM

### Engage and collaborate

The Portal was developed by 34 North and is based on OpenNRM, an open source set of web-based data management tools that support water quality forecasting, model visualization and collaborative management.

## About the Sacramento River Watershed Program (SRWP)

The Portal is a key element of the Sacramento River Watershed Program's (SRWP) mission to improve watershed health by providing accurate, timely, and graphic information about the Sacramento River Watershed. SRWP works to improve communication, cooperation, and collaboration and to create and promote effective programs and projects that address growing demands for water, maintain existing agricultural production, and sustain rural communities, while restoring rivers and protecting a growing recreational economy. The Portal serves as an information hub connecting our partners to data, funding, projects, and each other. It represents an important piece of SRWP's landscape-level planning to cooperatively align watershed management activities and risk mitigation (fire, flood, drought) with community and economic development goals in the Sacramento River Watershed using a collaborative approach.



## Project Partners

